



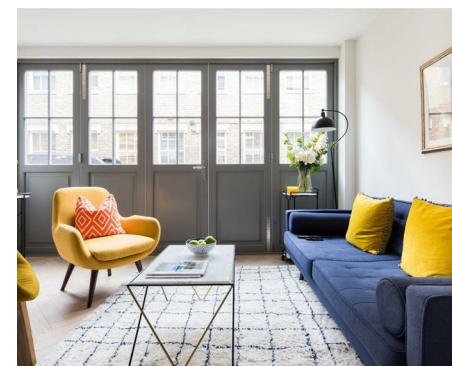
NEWINGTON  
LONDON

3 Bedrooms

House - Terraced

Located in London

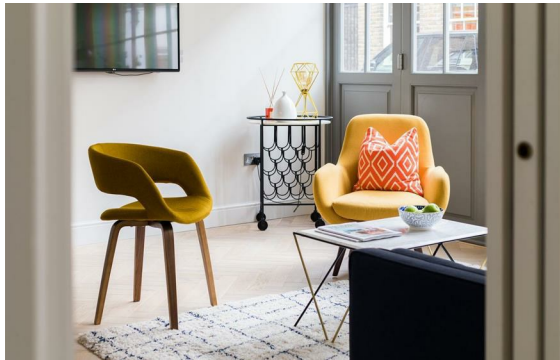
£1,269 Per Month



info@newingtonstates.com

<http://www.newingtonstates.com>

020 7724 2233



A beautifully refurbished three-storey mews house finished to an exceptional standard, combining period charm with a sleek contemporary interior.

Ideally situated close to Paddington and Edgware Road stations, as well as an array of local shops and amenities, the property offers over 1,150 sq ft of well-designed living space.

The accommodation comprises a bright open-plan kitchen and reception area, guest WC, and storage room on the ground floor; two double bedrooms and a modern family bathroom on the first floor; and a principal bedroom with a stylish en-suite shower room on the top floor.

EPC rating: C

## Energy Efficiency Rating: C

Agents Note: Whilst every care has been taken to prepare these particulars, they are for guidance purposes only. All measurements are approximate and are for general guidance purposes only and whilst every care has been taken to ensure their accuracy, they should not be relied upon and potential buyers/tenants are advised to recheck the measurements.

# NEWINGTON LONDON

60 Upper Montagu Street

London

W1H 1SN

020 7724 2233

[info@newingtonstates.com](mailto:info@newingtonstates.com)

<http://www.newingtonstates.com>